

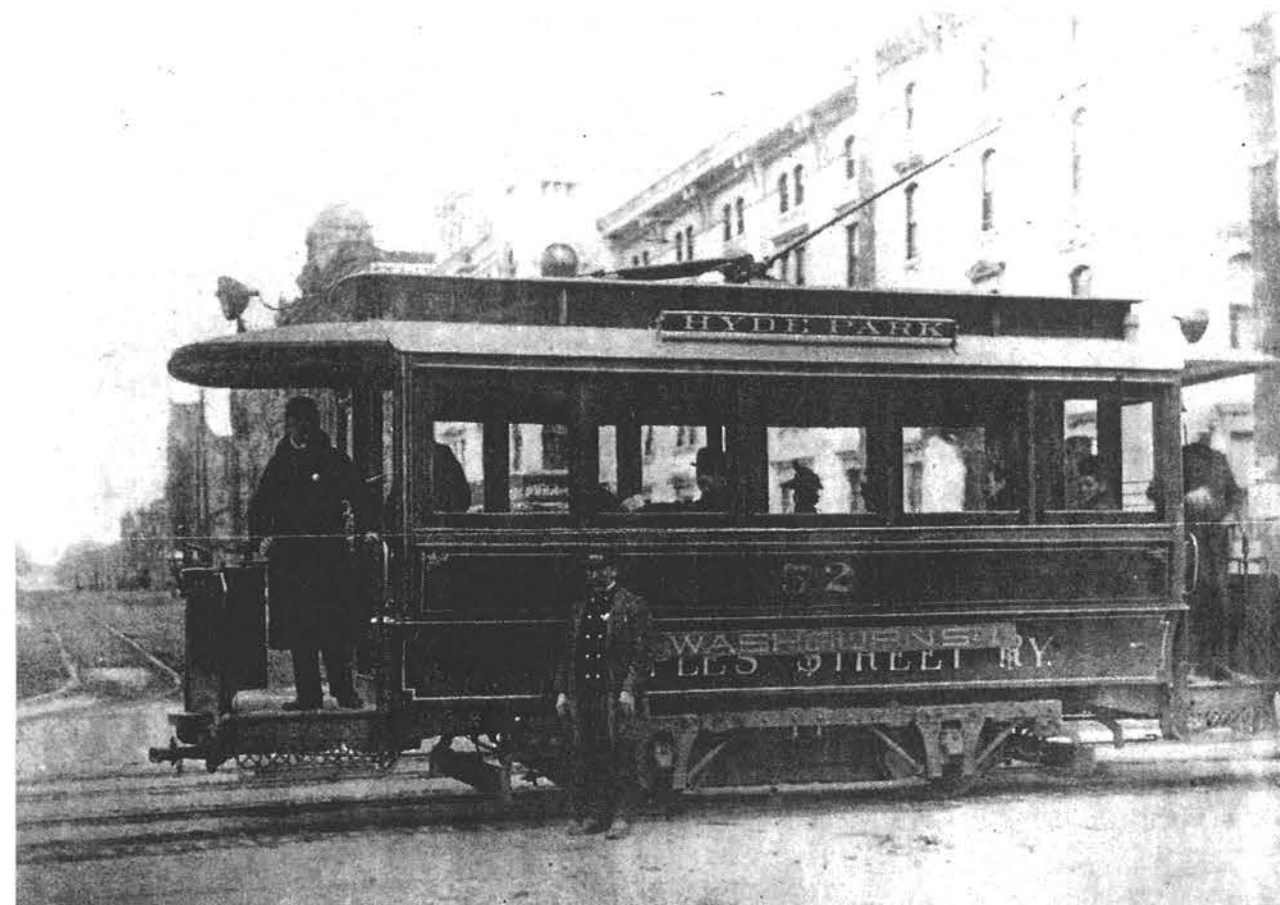
UPCOMING PROGRAMS AND EVENTS

- ONGOING** *THE LITTLE BLACK DRESS*
2008 FASHION EXHIBIT AT THE CATLIN HOUSE
- THRU FRI. JAN. 25** *HOBO HOMES DURING THE DEPRESSION*
HOPE HORN GALLERY, UNIVERSITY OF SCRANTON. DETAILS CALL 941-4214. (Pg. 10)
- SUN. FEB. 3** *THREE GENERATIONS IN HYDE PARK*
LECTURE BY DENNIS AND SHARLEEN MARTIN AT THE CATLIN HOUSE 2 P.M. (Pg. 6)
- TUES. FEB. 19** *THE PROPER DECORATION OF BOOK COVERS: THE LIFE & WORK OF ALICE C. MORSE*
LHS BUS TRIP TO NEW YORK CITY EXHIBIT FOR CURATORS CHAT.
CALL LHS FOR RESERVATIONS. PRICE \$35 PER PERSON. SPACE IS LIMITED. (Pg. 11)
- WED. FEB. 20** *LOST AND RENEWAL, A SYMPOSIUM ON FIRE*
MAHADY GALLERY, MARYWOOD UNIVERSITY 7 P.M. DETAILS CALL 348-5278. (Pg. 4)
- SUN. MARCH 30** *THE WOMEN OF THE EMIRATES: HOW THEIR LIVES HAVE CHANGED*
LECTURE BY DUNMORE NATIVE DR. TINA RODGERS LESHER. 4 P.M. LOCATION TBA. (Pg. 11)
- SAT. APRIL 12** *ANNUAL APPOMATTOX DAY LUNCHEON**
ANNUAL LUNCHEON AT THE CLARION HOTEL 1:30 P.M.
CALL 457-8438 FOR RESERVATIONS. PRICE \$20 PER PERSON. (Pg. 10)
- SAT. APRIL 12** *SOLDIERS & SAILORS MONUMENT RE-DEDICATION**
COURTHOUSE SQUARE AT 4 P.M. RECEPTION FOLLOWS AT THE CATLIN HOUSE.
- WED. APRIL 16** *GETTYSBURG LECTURE**
FEATURING GARY ROCHE. CATLIN HOUSE AT 7 P.M.
- SAT. APRIL 19** *GRAND CIVIL WAR BALL**
VINTAGE DANCE WORKSHOP WILL BE HELD FROM 1 P.M. TO 3 P.M.
(ADDITIONAL LESSONS OFFERED ON WEDNESDAYS MARCH 26, APRIL 2, AND APRIL 9.)
- SAT. APRIL 26** *CLEAN UP DAY AT THE CATLIN HOUSE* DETAILS TBA
- SAT. MAY 10** *ANNUAL PLACES OF WORSHIP TOUR* DETAILS TBA

*GO TO WWW.SCRANTONCIVILWARDAY.COM FOR INFORMATION ABOUT CIVIL WAR EVENTS.

PEOPLE'S STREET RAILWAY SYSTEM

By Ed Osman



The People's Street Railway provided public transportation for almost two decades.

Every time there is a significant rise in gas prices – and that seems to be happening with increasing frequency – it sparks renewed interest in mass transportation. In our area, that seems to be limited to local bus service, tourist trolley service to Montage Mountain, and the proposed restoration of commuter rail service to New York City and environs. Our choices may be few now but in the past that was not the case.

Only a generation or so ago we had many choices. We had the Scranton Suburban Railway

Company which gave Scranton its nickname “The Electric City.” We had the Laurel Line, the Northern Electric Trolley Line, and the Phoebe Snow thundering through town among others. But many people may not be aware of Scranton’s very first venture into local mass transportation. It was the People’s Street Railway, and it was not powered by steam or electricity but by horses. Horse drawn cars on rails!

By the mid-1860s Scranton was a rapidly growing city. The railroad had

Continued on page 5

FROM OUR PRESIDENT...

Dear Fellow Members,

Happy New Year! I am pleased to report that Phase II of the Catlin House Restoration is progressing nicely. New stucco and mahogany half timbering have been applied where needed and all windows have been reworked to be fully operational. It is remarkable that so little has changed in saving historic houses since Ann Pamela Cunningham and her intrepid band of ladies saved Mount Vernon. Of course, it all boils down to money and we are fortunate that our members understand the importance of preserving the Society's home. To date, we have raised \$11,612 of this year's Fund for the Future goal of \$46,125. If you haven't sent your contribution, you still have time. We hope to reach our goal by February 29th.

2008 promises to be a very exciting year. In addition to the Catlin House restoration, we are pleased to be celebrating the Centennial Anniversaries of two Lackawanna County treasures, the historic Lackawanna Station and the Everhart Museum. To mark these milestones, the Society has come up with an interesting plan. This year we invite you to celebrate these TWO historic and cultural assets by helping us DOUBBLE our membership. Renewals will be mailed soon and every member will be encouraged to share our history by inviting a friend to join. As an incentive, any member who "Brings A Friend" as a new member will receive their choice of a photograph print of the Everhart Museum or the Lackawanna Station. Additional details will be provided in your renewal notice. We hope that your response will be positive and that all of our members continue to support us in 2008 as we work to preserve Lackawanna County History.

On behalf of the Trustees and Staff, it is my privilege to wish you all a very healthy and prosperous New Year.

Alan Sweeney
President



*The Lackawanna
Historical Society 2008-09*

OFFICERS
Alan Sweeney President
Richard Bovard 1st Vice President
Donald Frederickson 2nd Vice President
Douglas Forrer Treasurer
Mark Cruciani Assistant Treasurer
Arlene Devereaux O'Hara Secretary

TRUSTEES
Ellie Axford
Richard Bovard
Laurie Cadden
Joseph F. Cimini, Esq.
William Conlogue
Mark Cruciani
Douglas Forrer, CPA
Donald Frederickson, Esq.
Michael Gilmartin
Thomas Horlacher, AIA
Kathleen Keating
Richard Leonori, AIA
Mary Jane Memolo
Arlene Devereaux O'Hara
Dalida O'Malley
Ella S. Rayburn
Elaine Shepard
Alan Sweeney

EMERITUS
Leola Collins
Edward Miller
Paul H. Price Esq.

STAFF
Mary Ann Moran-Savakinus Executive Director
Ann Marie O'Hara Office Manager
Brian Clark Newsletter Editor

The Lackawanna Historical Society is a 501(C) (3) non-profit organization which is dedicated to keeping vital the history of Lackawanna County. It is supported in part by the Catlin Memorial Trust, Lackawanna County, the Pennsylvania Historical and Museum Commission and membership dues.

The Lackawanna Historical Society Journal is published by the Lackawanna Historical Society, 232 Monroe Avenue, Scranton, PA 18510 Tel. (570) 344-3841. Address questions to Mary Ann Moran-Savakinus at maryann@lackawannahistory.org.

Members of the Society receive this publication. Membership contributions are \$25 and up for Individuals, \$35 for Families, and \$125 for Organizations. Special Silver and Gold Corporate memberships are available.

The Lackawanna Historical Society Journal is printed in Scranton, Pennsylvania. Entire contents copyrighted © 2008 by the Lackawanna Historical Society.

SPRING PROGRAMS AND ACTIVITIES

*The Women
of the Emirates:
How Their Lives Have
Changed*

A presentation
by Dunmore native
Dr. Tina Rodgers Leshner,
a professor of journalism
and former chairman of the
Department of Communication at
William Paterson University in
Wayne, New Jersey.
March 30, 2008 at 4 p.m.

The location for this event will be announced.

**Society Bus Trip Planned for
New York's Grolier Club**

On Tuesday, February 19th, the Lackawanna Historical Society will take a bus trip for a curator's chat with Mindell Dubansky at The Grolier Club of New York, 47 East 60th Street in New York City. Mindell will speak about her collection of the work of former Scranton Central art teacher, Alice C. Morse which will be shown at the Grolier Club in *The Proper Decoration of Book Covers: The Life and Work of Alice C. Morse* detailing the history, technology and conservation of 19th century publishers' bindings. The exhibit, which runs from January 23rd through the end of February, will then come to the University of Scranton's Hope Horn Gallery and is scheduled to open in Scranton on April 4th! Don't miss this exciting opportunity for a special preview with the New York Trip.

The cost is \$35 per person and space is limited. For more details and reservations, call 344-3841.

Dunmore Cemetery Tour Knocks 'em Dead

The 2007 Dunmore Cemetery Tour was held in October and attendance reached an all time high with over 300 people attending on October 7th and more than 450 on October 14th. Under the direction of Julie Esty, veterans of the tour - the Woods family, Joan Glowinski, Nancy McDonald, Jenn Ochman, Bridget Conlogue, Megan Esty, Kelly Kirchner and John Moran were joined by newcomers Karl Barbee, Chuck Kearney, Wendy Belaski and Leslie Kirchner. The tour included twenty stops, where costumed Past Players portrayed twenty eight people from the past.

Congratulations to Tour Planner Julie Esty and the Lackawanna Historical Society's Past Players for their great work in planning another successful cemetery tour. Thanks to all who volunteered, including our dedicated sponsors like Pesavento Monuments.

About Membership... Membership privileges include unlimited access to the Society library, 10% discount in our bookstore, advance notice and invitations to all Society activities, special members-only programs and the quarterly newsletter. Attached is a membership form you can use to renew your membership or give to a friend or neighbor who is interested in joining. Please return it to: The Lackawanna Historical Society at 232 Monroe Avenue, Scranton, PA 18510

LACKAWANNA HISTORICAL SOCIETY MEMBERSHIP FORM

Student \$10
 Individual \$25
 Family \$35
 Contributing \$75
 Sustaining \$150
 Silver Corporate \$250
 Gold Corporate \$500

NAME _____
ADDRESS _____
TELEPHONE _____

Pesavento Monuments

John E. Pesavento, C.M.
Your Personal Memorial
and
Pre-planning Counselor

1701 Oram St., Scranton PA. 18504
570.344.2813

www.pesaventomonuments.com





*Congratulations
to the Everhart Museum
and the historic Lackawanna Station
celebrating 100 years in Scranton this year!*

Appomattox Day Luncheon

The 2008 Appomattox Day Luncheon will be hosted by Camp #8 SUVWCW, Aux#10 ASUVWCW, and Tent#59 DUVCW on April 12th at 1:30 p.m. at the Clarion Hotel, 300 Meadow Avenue in Scranton. The cost is \$20 per person and advanced reservations are required by March 20th. For more information, contact Joe Long at (570) 457-8438

COMING SOON

ANNUAL CIVIL WAR BALL

WWW.SCRANTONCIVILWARDAY.COM



Hobo Homes During the Depression: Photographs of the Scranton "Jungle"

By R.W. Jeffers January 4 through January 25.
The Hope Horn Gallery Hyland Hall, 4th Floor
The University of Scranton. Call 941-4214.

NEW MEMBERS

Family

John T. Brundage, Moscow
Francis and Grace Conforti, Moscow

Individual

Susan L. Bradley, Nicholson
Betsey Cooper, Clarks Green
J. Patrick Dietz, Clarks Summit
Stephanie Kato-Clark, Jermyn
Lisa Lewis, West Pittston
Donald Pacyna, Scranton
Katie Weinschenk, Dunmore
John Whitman, Tucson, AZ.
Jeanne C. Yarmey, Clarks Summit

Sustaining

Chris Posly, Olyphant

Correction

We misspelled a name in the Fall 2007 Newsletter under New Members Individual Category. It should have been written: Joan Hodowanitz, Scranton. We apologize for this error.



VOLUNTEER CORNER

Welcome to Brian Clark, LHS member and Communications Coordinator at Marywood University. He has stepped in to fill Cheryl Kashuba's shoes to volunteer to prepare the LHS Newsletter. We are sure he will do a great job and are grateful to him for his assistance.

Welcome back to Moosic resident **Josh Felter** who has returned to the Catlin House to volunteer. Josh has been assisting Bob Booth with research projects and library work. He has been most helpful in indexing several local histories and will continue his work by creating indexes for local periodicals.

*Thank you to all of our volunteers!
You make what we do possible.*

Memorial Membership

Morris Raymond Whitman, Jr.
By William T., Catherine, David, Donna, Crystal
and Amy Whitman, Rose Finch and Donald Zecca

Society Elects New Officers, Trustees at December Open House

The meeting of the Nominations Committee of the Lackawanna Historical Society was called to order at 7 p.m., November 14, 2007 by Chair Donald Frederickson.

The election of officers was conducted at the Members-Only Holiday Open House on December 6, 2007.

On a motion by Donald Frederickson, Jr. and Second by Richard Leonori, the 2008 Officers were elected unanimously and include:

President	Alan Sweeney
First Vice-President	Richard Bovard
Second Vice-President	Donald Frederickson, Jr.
Secretary	Arlene Devereaux O'Hara
Treasurer	Douglas Forrer
Assistant Treasurer	Mark Cruciani

The following Trustees were elected to serve as the Class of 2010 on a motion by Donald Frederickson, Jr. and Second by Rosemary Gallagher.

Joseph F. Cimini, Esquire
Mark Cruciani
Laurie Cadden
Douglas Forrer
Mary Jane Memolo
Elaine Shepard

IN THE BOOKSTORE

Gateway to the Clouds



*The Story of a Short Line Railroad
The Scranton, Dunmore, Moosic Lake Railroad
1862-1925*

Alan and Judy Sweeney

Tribute Books, \$21.95

history of the Scranton, Dunmore, and Moosic Lake Railroad.

Timothy and John M. Burke purchased land near Moosic Lake early in the 20th century with plans to build a resort. The brothers found the lake itself was a popular tourist spot, and their initial steam-powered railway attracted many riders for several years. A

Gateway to the Clouds: The Story of a Short Line Railroad

During a Christmas-time train ride between Carbondale and Scranton, Alan and Judy Sweeney asked their fellow passengers about local rail history. The ensuing discussion led to this book detailing the

deadly accident in 1910 destroyed two engines, and—with the assistance of the Scranton Railway Company—the line re-opened the next year as an electric-powered system.

When both brothers died, the rail line lost its two chief proponents. Faced with the rise of automobiles, the railway to Moosic Lake made its last run in 1925. The Scranton Railway Company claimed the remaining equipment, and the remains of the Burke's property was sold in 1936.

Drawing from newspaper clippings, postcards, records owned by the Lackawanna Historical Society, and private collections, the Sweeneys tell the story of the popular railway that transported a generation to Moosic Lake to escape the city's smog and heat.



FUND FOR THE FUTURE BREAKER BOYS

ANONYMOUS
JOHN BECK
FAYE AND RICHARD S. BISHOP
ROBERT E. BOOTH
MR. AND MRS. WILLIAM CALPIN, JR.
STEPHEN AND ELLEN CASEY
CEMETERY ASSN. OF DUNMORE
ANN W. CHAMBERLIN
SHIRLEY COTTRINO
ROBERT J. DONOVAN
JOSEPH L. DORSEY, M.D.
GRACE FLANNELLY
MR. AND MRS. GORDAN FLOREY
RUTH FREIDENBURG
WILLIAM J. GERRITY
GERRITY'S SUPERMARKET
POLLY AND ALAN HUGHES
JUDITH M. KELLER
EDWIN M KOSIK
ELENOR KRUK
DENNIS KRZANOWSKI
CHESTER AND DEILSIE KULESA

MR. AND MRS. RICHARD H. MACGREGOR
WILLIAM F. NALEVANKO
BARBARA F. MANNING
PATRICIA A. MARION
ANN MASSENKEIL
"RABBI JOE" MENDELSON
MR. AND MRS. WAYNE J. MILLER
ANN AND LEO MOSKOVITZ
DR. AND MRS. CHARLES NEWTON
BARBARA D. NOTO
VERA JEAN PACE
IVANA PAVELKA
VERA M. PUGH
MARGARET C. RAFTER
JOHN AND SILKE REDDINGTON
LINDA SCOTT
MARY ANN SEMBROT
DANIEL AND LINDA SLOAN
DOUGLAS L. SMITH
PAT TOBIN
MARILYN VITALI
MARILYN WENTLAND

AND WILLIAM J. YOUNG

Office Convention T-shirts Sales

Office Convention 2007 T-shirts are available at the Lackawanna Historical Society with the phrase,

"There's no convention like a Scranton Convention"

Sizes available: Medium and Large. \$5 each.

Call 344-3841 or stop by the Catlin House.

Don't miss these exciting local events...

The History of the
Abington Community Library

Thursday, February 7 at 7 p.m.

Abington Community Library

1200 W. Grove St. Clarks Summit

A presentation by Dennis and Sharleen Martin

Free Admission

Advanced Registration is requested: 587-3440

The Lackawanna Historical Society
joins local artist John Bromberg's
Sisyphus Project—Part II

Loss and Renewal: A Symposium on Fire

With historical perspective by Mark Boock

Wednesday, February 20 at 7 p.m.

Marywood University's Mahady Gallery

The Sisyphus Project runs from Feb. 9 to Mar. 9.

Festival of Trees

Thanks again to the students of Solomon Plains School, Plains, PA who assisted the Society by decorating our entry in the 2007 Festival of Trees at the Lackawanna County Trolley Museum on November 28th. Pictured are LHS Director Mary Ann Moran-Savakinus, Dylis Girmen, LIU #18 Transition Specialist, Robert Savakinus, Lisa Mushinsky and students Amber Mahalick, Tina Lizaiklo, and Jasvir Jacobs.



FUND FOR THE FUTURE

BARONS

MAYOR CHRISTOPHER DOHERTY

ENGINEERS

ELLA RAYBURN
ISADORE STECKEL

MINERS

ROBERT J. WALKER

IRON PUDDLERS

CELIA AND JIM HAGGERTY
STEVE AND JOANNE KAVULICH
MR. AND MRS. ROBERT MORRISSETTE
PIZZA BY PAPPAS

SILK THROWERS

ACCENTUATE/SIXEAST RESTAURANT-PAUL WANAS	MATTHEW D. MACKIE, JR.
GERALD AND KATHLEEN BURNS	DENNIS AND SHARLEEN MARTIN
CAROL CHISDAK	JANE J. MARTIN
CHARLES A. CONNELL	JOHN E. MCGUIGAN
MARY T. CONNOLLY	PATRICK AND PEGGY MCLAINE
JAMES A. AND MARLENE COURS	ROSEMARIE MECCA
MR. AND MRS. WILLIAM M. DAVIS	GINO MORI, M.D.
JAMES T. FLEMING	DALIDA O'MALLEY
DAVID AND ANN HAWK	MRS. ROMAYNE BELL PERITTE
NANCY AND JACK HIDDLESTONE	PESAVENTO MONUMENTS
JOAN HODOWANITZ	NICK PETULA
ROBERT F. HUESTON ✓	LENI PIASKY
KATHLEEN AND DOMINIC KEATING	HANK AND BARBARA PLATT
KURT AND NAN KEMPTER	MARY B. RHODES
JOHN KRISA, KRISA & KRISA P.C.	SCHIFF'S FOOD SERVICE
FRAN AND JERRY LANGAN	JUDY DESARRO AND ROBERT SNYDER

AND CURT WALTERS

THE FUND FOR THE FUTURE HAS RAISED \$11,612
(NAMES ARE CURRENT AS OF DECEMBER 8, 2007.)
ADDITIONAL NAMES WILL APPEAR IN THE NEXT ISSUE.)

People's Street Railway continued from page 1

arrived. The iron and steel industry was thriving. Coal mines were being opened. New industries such as The Dickson Manufacturing Company were growing. Immigrants were arriving. People lived farther away from their work place. It soon became obvious that there needed to be a better means than horseback to get to and from work and the many businesses that were springing up to serve the growing population.

In 1865 five men – Messrs. Dunning, Randall, Tracey, Bennett, and Raub – organized a company to meet that need. They raised \$50,000 and obtained a charter to create the People's Street Railway of Luzerne County (Lackawanna County didn't split off until 1878). The goal was to establish a line of horse cars to run between Scranton, Hyde Park, Providence and Dunmore. The original line ran out what are now Penn and Capouse Avenues then followed the old Delaware and Hudson tracks to Green Ridge Street. From there it crossed the river and followed the river along its west bank to Providence.

A year later, while the route was still under construction, the company received some competition. The Scranton and Providence Passenger Railway Company was formed to also provide horse car service from central city to Providence via Green Ridge. This line left from the old DL&W depot and made its way up Franklin to Spruce to Wyoming and out to Sanderson Avenue and East Market Street. Both companies started operations in 1867, but the latter company sold out to People's Street Railway within a few years. The lines were soon consolidated and operated under a single schedule. Cars ran "as often as once an hour from 7:00 a.m. to 10:00 p.m. except Sundays, and on Sundays to run as often as will accommodate those wishing to attend churches and Sunday schools," according to the schedule.

Keeping to this schedule, however, was not always easy. Weather, poor road beds, and temperamental horses or mules often slowed things down. There were also occasional holdups at the ends of the lines. The reversal of the car for the return trip was done on a small turntable at the end of the track. If the turntable was frozen or otherwise out of commission the driver simply drove off the end of the track, made a wide circle, and then drove back on the track. Easy to say, not so easy to do. If he did not hit the

They appreciated just being able to ride in the 'hoss cars' or 'bob-tail cars' as they were known.

rails correctly, he had to dismount and guide his animals with one hand while pushing the car back with his shoulder. According to observers this was usually accompanied with "a good deal of profanity and perturbation." Any lengthy delays usually meant that the car would meet another car coming the other way, creating further problems. Passing was accomplished by one driver steering his car completely off the track to let the other pass or by each driving off one wheel and passing with the outer wheel bumping the ties. Then, of course, the driver had to get the car back on the tracks; this sometimes required the assistance of the passengers.

The passengers didn't seem to mind these inconveniences all that much. They appreciated just being able to ride in the "hoss cars" or "bob-tail cars," as they were known, even though the fare of ten cents could be considered a little high. Passengers entered and exited from the rear of the car, went to the front of the car to drop their coins in a box by the driver, and then took their seat. If the passenger failed to make that trip, the driver jingled a bell which called their failure to the attention of all the other passengers. This usually corrected the problem quickly. If all went well the trip to "faraway" Providence – a distance of two miles with few houses in between – took about a half hour. The cars proved to be a very popular means of transportation. One report has more than 200,000 people transported over the rails in 1878 alone.

The reign of the People's Street Railway only lasted about two decades. In 1886 it was replaced by the famous electric trolleys of the Scranton Suburban Railway Company. All but forgotten now, it should at least be remembered for laying the foundation for the glory days of our Electric City.

ABOUT THE AUTHOR:

Ed Osman volunteers for the Lackawanna Historical Society and most recently worked with LHS Collections Manager, Ella Rayburn, to install the "Tools that Built Scranton" exhibit at the William J. Nealon Federal Courthouse Building.

Three Generations in Hyde Park

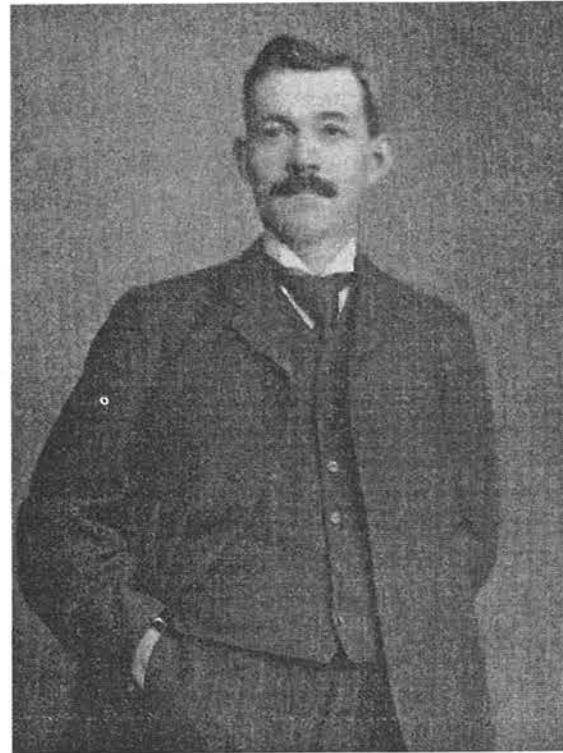
Article and exhibit prepared by Dennis and Sharleen Martin

They came from South

Wales bringing their skills, language, and culture with them. They left the anthracite mines of Wales to gather black diamonds in the newly created anthracite mines of Eastern Pennsylvania. But to merely call them "miners" ignores what else they contributed to America. The *Baner America* was founded in 1868 in Scranton as a national Welsh-language newspaper. The First Welsh Congregational Church, founded in the 1850s, held its services in Welsh. Hyde Park, now Scranton's West Side, was known as the "Welsh Athens of America." Their culture was part of the "melting pot" here. A new exhibit at the Lackawanna Historical Society opening mid-January looks at the experiences of one such family, typical in its uniqueness. Let us introduce them to you.

The first American generation that we chronicle includes John R. Thomas and Della P. Evans. John's father was William R. Thomas, who came to Northeastern Pennsylvania from Wales in 1861 as a miner. John was born in Hyde Park in 1865. He started as a breaker boy in the mines at age eight and advanced to being a miner. While a miner, he married Sarah Harris and they had a son, Chester (Chet). In 1890, John became a letter carrier and served as the secretary of Branch 17 of the National Association of Letter Carriers. About the age that his father had started working, Chet lost his mother and John was a single father.

Della P. Evans, a Scranton schoolteacher, was one of the founding members of Plymouth Congregational Church which separated from First Welsh Congregational in



John R. Thomas

1881 to allow English-language services for those who would not or could not speak Welsh. Della was born in Gibson Township, the daughter of Daniel J. Evans. Daniel had come to America in 1849 and founded one of the oldest insurance and real estate agencies in Scranton. He was also known by his bardic name of Daniel Ddu, as he was a Welsh poet of distinction as well as founder of the Welsh Philosophical Society and editor of *Baner America*.

Della was also one of the founders of the Christian Endeavor Society at Plymouth Congregational Church (the first such in Pennsylvania). The Christian Endeavor Society (still active today) is a group designed to involve young people in a leadership role in their church. In 1890, Della became the sixth director of the Sherman Avenue Mission Sunday School run by Plymouth. This

was a very unusual undertaking for a woman of that day. She served in that capacity until marrying John R. Thomas in 1898. John was active in Plymouth Church as well as the Sherman Avenue School, serving as librarian, then secretary of the school many years before becoming the eighth director. John became a partner in Evans and Thomas in 1900 and John and Della had a son, Everett (Ev), in 1901.

John and his two sons were active in Plymouth Congregational Church as well as several fraternal organizations, all being 32nd degree Masons and members of the Knights of Pythias. For most of a century, to be Welsh in Scranton meant to be Republican and the Thomas family was that also. Chet had joined his father's business, later renamed as Thomas and Son Insurance. While the insurance and real estate firm was the nucleus of their work, John also was a vice president of Ralph E. Weeks Company—a position Chet held after him. The Lincoln Trust Company noted in a resolution on John's death that he had been a director since its inception and, "Sound in judgment, uniformly courteous, wise in counsel, he endeared himself to each of his fellow directors as a brother."

Ev was a student at Lincoln School #14 in Hyde Park (on the site of the Lincoln-Jackson School today) and later went to Phillips Exeter Academy in New Hampshire and then on to MIT. After John's death in 1923, Ev joined the insurance and real estate firm, renamed as Thomas Brothers. Chet became president of Wesel Manufacturing (still active in Scranton) and president of the West Side Hospital. He was active in the Lions Club, St. David's Society, and was a major team leader in many Community Chest campaigns. Ev was active in the Lackawanna Historical Society, serving over time as a board member, treasurer and president. During World War II, Chet served on the local draft board while Ev worked with the Office of Price Administration, handling food and gasoline rationing

among other duties.

The third generation consisted of Helen and John R. II, children of Chet and his wife, Mary Evans Thomas, and Cynthia, daughter of Ev and Catherine Davies Thomas. Helen attended the Lincoln School and (Scranton) Central High and was active in Girl Scouts. She graduated from Wheaton College, received a Master's Degree from Radcliffe, and taught English for a year in France, receiving a French certificate from the Sorbonne. During WW II, she was a WAC serving with the OSS in North Africa and Italy and she remained in intelligence work after the war. John R. attended the Lincoln School then Phillips Exeter Academy. After graduating from Princeton, John R. worked for Pratt and Whitney until he followed his father into Wesel Manufacturing, becoming a vice-president and later president. Cynthia also attended Lincoln School and Central High before graduating from the Yale University School of Music and receiving a Master's Degree in Music Education from Holy Names College in Oakland.

The exhibit includes report cards, photographs, letter carrier and fraternal organization mementos, Christian Endeavor Society and Sherman Avenue Mission pins and information, as well as many personal items. Revisit rationing during WW II and get a glimpse of Central High in the 1940s. We are indebted to Cynthia Thomas Stuck and John R. Thomas II for artifacts and assistance in creating this exhibit.

**Join us at the Catlin House
for a special introduction to the
exhibit and the people
it acknowledges
on Sunday, February 3, at 2 p.m.
Be sure to also check page 12 for a
complete list of upcoming events.**

- "Blueprint of the Warrantee Map of the Wild Lands of the Lackawanna Iron and Coal Company Located in Roaring Brook and Lackawanna Townships and the City of Scranton". December 1, 1894. H27.75, W41, Fair condition, Torn corners.
- "Map of Blocks and Lots of the Lackawanna Iron and Coal Company in the City of Scranton, Pa." Undated, H14, W8.5.
- "Pennsylvania Power and Light Company, Scranton Service Area". January 1, 1954. H9.5, W14.25, (Quantity: Three)
- "Blueprint of Steam Heat Mains in Scranton, Pa.". Scranton Electric Company, May 21, 1925, Revised June 1950. H15.75, W25.75.
- "Blueprint of Proposed Railroad Viaduct Near Avoca on Main Line", Undated, H22.75, W40.5.
- "A Drawing of Olyphant, Lackawanna County, 1890", Published by the Ye Old Mapped Company, Undated, H 17.25, W22.75, (Quantity: Two)
- "Map of the Dalton Quadrangle", U.S. Dept. of the Interior Geological Survey, 1946, H27, W22.25, (Quantity: Two)
- "Map of the Carbondale Quadrangle", U.S. Dept. of the Interior Geological Survey, 1949, H27, W22.25.
- "Map of the Dundaff Quadrangle", U.S. Dept. of the Interior Geological Survey, 1892, Reprinted 1920, H19.75, W16.5, (Quantity: Three)
- "Historical Map of Old Forge, Lackawanna County, Pa.". Compiled by William J. Szczech, Asst. High School Principle, 1949. H8.5, W11.
- "Historic Map of Adjouqua (Lower Lackawanna Valley in Pa.)", Copyright 1938 by Wm. J. Szczech, Asst. High School Principle. H11, W16.75. (Quantity: Three)
- "Historic Map of the Wyoming Valley in Pennsylvania Showing Points of Interest Associated with its Early History". Shows Battle of Wyoming, 1778 and Sullivan's encampment, 1779. Printed with permission of the Wyoming Historical and Geological Society, Undated. H11, W16.75. (Quantity: Three)
- "Map of the Village of Carbondale, Luzerne County, Pa.". Surveyed and Published by P. Nunan, 1851. Reprint undated. H21, W17.5.
- "Blueprint of Township Road Map Elmhurst, Lackawanna County, Pa," July 20, 1941, H31, W18.75. (Quantity: Four)
- "Mountain Tunnel Workings". Shows land owners: Mary Dilly; C.B. Hackley; Jones' Simpson & Company. Undated. H17, W21.25. One negative photostat, two positive photostats.
- "Mountain Tunnel Workings". Shows land owners: Mary Dilly; C.B. Hackley; Jones' Simpson & Company. Also reflects under ground coal chambers. Undated. H16.25, W19.25.
- "Green Ridge Coal Company Land showing Under Ground Coal Chambers of Downtown Scranton and Green Ridge", Undated, H30.5, W65.5 Fair condition, Torn corners.
- "Map of Worchester, England, 1885", Reprint Undated, H10, W14.5.
- "Map of Frontiers of France and England from Montreal to Philadelphia". Reproduction, date unknown, of map written in French. H14.5, W18. P

"Travel" to Exotic Lands for Ten Dollars

The Board of Trustees also approved the removal and sale of several bound volumes of Travel magazine with select years from 1917 through 1932 as not supporting the society's mission. Each volume contains six months and is bound in buckram with leather corners and spines. The leather does have red rot, which is not unexpected. The magazine has lots of neat travel ads, some are in beautiful soft, full color. Black and white photographs illustrate stories of far away places or nearby adventures reminiscent of the National Geographic. We are asking \$10 per bound volume.

Additional De-Accessioned Titles from our Library are also available for \$1

- | | |
|--|--|
| "A Price Guide to Antiques" | "Things You Should Know about China" |
| "The Book of Norman" | "New Testament" |
| "Official Guide to Helston and the Lizard Peninsula" | "Dedication of the Reproduction of Sulgrave Manor" |
| "The Williamsburg Collection of Antique Furnishings" | "The Hammond World Atlas" from TIME magazine |
| "West Chester" | "Declaration of Independence" Radio Script |

MAPS FOR SALE

The following maps have been approved for De-Accession by the Board of Trustees as not supporting the LHS mission. Therefore we are offering them for sale to our members. They include standard maps from the US, Canada, and parts of the United Kingdom for \$1 each. Most are folded road maps but several other styles of maps and pamphlets are also listed. In the case of the local maps and blueprints, they are duplicates. These paper materials are being offered for \$10 each. To make a purchase, please contact the society. Listed maps are in good condition unless stated otherwise.

MAPS for \$1

United States Road Maps (Approx. 4 x 8 Inches when folded) and about 24 x 33.5 inches open:

- "Esso Road Map: Eastern United States and Adjacent Canada", 1958.
- "Standard Oil Road Map: Eastern United States", 1963, and 1967, H22, W37.
- "Esso Road Map: Eastern United States", April 1965, 1968-1969, 1970, and 1971-1972.
- "Exxon Road Map: Eastern United States", 1973 and 1973-1974.
- "Esso Road Map: New England States", 1955-1956.
- "Exxon Road Map: New England States", 1973, 1974, and 1975-1976.
- "Rhode Island", Official Highway Map, Undated, H34, W25.25, and 1969-1970, H34, W25.5.
- "Sunoco Road Map: Massachusetts, Connecticut & Rhode Island", Undated, H18, W26.75.
- "Gulf Road Map: Metropolitan Boston and Cape Cod", Undated, H25.5, W32.
- "Esso Road Map: New York State", 1968, 1970, and 1971-1972.
- "Exxon Road Map: New York State", 1973 and 1974.
- "Esso Road Map: New York City and Long Island", 1956-1957, 1969, 1970, and 1972.
- "Esso 1964 World's Fair Map", 1964-1965, H16, W24.
- "New York City Map", New York Convention and Visitors Bureau, 1953-1954, H20.5, W16.
- "AAA Map: New York City and Vicinity and Long Island", 1967-1968, H26, W36.
- "Esso Road Map: State of New Jersey", 1964, H32, W18; 1969, and 1971. (Quantity: Two)
- "American Oil Road Map: State of New Jersey", Undated, H18, W33.
- "Year 'Round Guide New Jersey", State Forests, Parks Recreation Areas, Natural Area and Historic Sites. Published by the Bureau of Parks, P.O. Box 1420, Trenton, NJ 08625, July, 1972, Pamphlet. 12 Pages.
- "New Jersey Tercentenary Map 1664-1964, Published by Public Service Electric and Gas Company, 1963. H33, W25.
- "Official Highway Map of Pennsylvania", 1969, H25.5, W40.
- "Official Map of Pennsylvania", Undated.
- "Esso Road Map: Philadelphia and Vicinity", 1965, H18, W32.5; 1970, H18, W32.5. (Quantity: Four)
- "Gulf Road Map: Philadelphia", 1963, H17.5, W32.
- "Texaco Road Map: Philadelphia", 1965, H23, W36.
- "Atlantic Imperial Oil Road Map: Philadelphia", 1965, H23, W36.
- "Gulf Road Map: Pittsburgh Tour guide Map with sight-seeing tour", Undated, H21.5, W32.
- "Map of Central Philadelphia showing how to reach many places of interest". Published by the Hospitality Center, Philadelphia Convention & Visitors Bureau, 16th St. & Pennsylvania Blvd, Philadelphia, Pa. March 1, 1962. H9.5, W15, Fair condition.
- "Esso Road Map: Washington, D.C. and Vicinity", 1960, H25, W23; 1963, H25, W23; 1965, H25, W23; 1967, H25, W23.
- "Standard Oil Road Map: Southeast United States", 1954, H23.5, W33.5.
- "Esso Road Map: Delaware, Maryland, Virginia, West Virginia", 1964, H18, W32.25; 1967, H18, W32.25; 1969, H23.5, W33.5, (Quantity: Two); 1970, H23.5, W33.5; 1973, H23.5, W33.5.
- "Esso Road Map: Baltimore and Vicinity", 1965, H16.5, W24; 1967, H16.5, W24.
- "Esso Road Map: Tennessee, Kentucky", 1964, H18, W24.5; 1966, H18, W32.5; 1972. (Quantity: Two)

"Esso Road Map: North Carolina, South Carolina", 1956, 1962, 1965, H18, W32; 1967, H18, W32; 1970. (Quantity: Two)

"Exxon Road Map: North Carolina, South Carolina", 1973. (Quantity: Two)

"Esso Road Map: Alabama and Georgia", 1965, H18, W24; 1970, H18, W24.

"Enco (Esso) Road Map: Alabama and Georgia", 1970, H18, W24.

"Enco (Esso) Road Map: Atlanta and Vicinity", 1972, H25, W18.5.

"Chevron Road Map: Georgia Alabama", 1971, H18, W26.5.

"Standard Oil Road Map: Georgia Alabama", 1962, H18, W25.

"Esso Road Map: New Orleans and Louisiana Gulf Coast", 1967.

"Texaco Road Map: State of Mississippi", 1965, H18, W26.

"Texaco Road Map: State of Louisiana", 1965, H18, W26.

"Gulf Road Map: State of Florida", 1965, H18, W40.

"Esso Road Map: Central and Western United States", April 1962.

"Standard Oil of Ohio Road Map: State of Ohio", 1971, H26, W35.5.

"Utah Highway Map", 1958, H36, W18.5.

Canadian Road Maps:

"Highways of Canada and Northern United States", 1966, H27, W38.

"Esso Road Map: Atlantic Provinces", 1973 and 1974.

"Esso Road Map: Quebec", 1974.

England, Scotland and Wales Road Maps:

"Esso Road Map: Northern England", 1968, H17, W36.

"Esso Road Map: South and East England", 1963, H36, W16.5; 1967, H36, W16.5.

"Esso Road Map: South and East England", Undated, H22, W27, Fair condition, map torn.

"Esso Road Map: South and West England", 1965, H17, W36; Undated, H23, W27.

"Esso Road Map: Wales and Midlands", Undated, H27, W23, Fair condition, map torn; 1968, H17, W36.

"Esso Road Map: Northern Scotland", 1968, H17, W32. and Southern Scotland", 1968, H17, W32.

"Esso Road Map: London", 1968, H24, W38.

"Esso Road Map: London, Road Map No. 1", Undated, H23, W26.5.

"AAA Road Map: Great Britain", 1968, H36, W25.

Other Maps:

"Map of Great Britain, Northern Section, Southern Section on the reverse." Published by the Automobile Association of London, Undated, H17, W23.25.

"AA West End Map of London", Published by the Automobile Association of London, Undated, H29.5, W24.25.

Miscellaneous Pamphlets:

"Philadelphia in the Spring", Published by the Division of Public Information, Office of the City Representative, 1962.

"Gloucester Bicentennial Tour", Featuring special attractions at Gloucester Court House. Sponsored by Gloucester County Bicentennial Committee. 1975 Virginia.

"See Historic Shirley Plantation, Charles City, Virginia". A James River Estate on Scenic Route 5 founded in 1613. Printed in 1974.

"In Virginia, Visit Historic Fredericksburg", Pamphlet includes map for walking tour. Undated.

"The Historic and Scenic Brandywine Watershed", Prepared for the Brandywine Association, West Chester, Pa. and Wilmington, De. 1958. H38, W25.

"Western Warwick, The Pawtucket Valley of Rhode Island, 1642", Printed by the Pawtucket Valley Daily Times, reprint undated, H17.5, W24.5.

MAPS for \$10

"General Highway Map Lackawanna County, Pa." Prepared by the Pennsylvania Department of Highways in cooperation with the Federal Works Agency. 1941 - Culture features as of 1939. H49.25, W36.

"A General Map of the Middle British Colonies in America", by Lewis Evans June 23, 1755. Reprint undated. H22.5, W30.75, Good condition with torn edge.

"A General Map of the Middle British Colonies in America", by Lewis Evans June 23, 1755. Reprint is undated. H22.5, W30.75. bound in protective cover.

"Pennsylvania Electric Cooperatives", 1962, Published by Southern Engineering Company, Atlanta, Ga. H22.5, W35.

"General John Sullivan's Indian Expedition 1779", Published by the Pennsylvania Historical Commission, 1929. H20, W27.

"The Historic and Scenic Brandywine Watershed", Prepared for the Brandywine Association, West Chester, Pa. and Wilmington, De. 1958. H38, W25.

"Map of Scranton, Pa.", R.L. Polk & Company, Publishers. 1908. H21.5, W32, Fair condition, mounted on cardboard.

"Kent County, Rhode Island, 1870", Reprint undated, H16.5, W25.5. bound in protective cover.

"Maryland, at the Time of the Ratification of the Constitution, from 1780 to 1794 in the Library of Congress at Washington". Issued by the United States Constitution Sesquicentennial Commission, June 20, 1974. H18, W26. bound in protective cover.

"Campaigns of the Civil War, In the Valley of History", Presented by the Potomac Edison Company, Hagerstown, Maryland, undated. H17, W24.25. bound in protective cover.

"Map of the Theatre of War, 1861-1865". Published by Benjamin Singerly, State Printer, Harrisburg, Pa. Undated. H10, W14. bound in protective cover.

"Map of the Waymart Quadrangle", U.S. Dept. of the Interior Geological Survey, 1948, H27, W22, (Quantity: Two)

"Tense Southeast Asia Sits on Powder Keg; Free Nations Bolster Defenses". Vietnam War newspaper article from The Scranton Tribune, Saturday, February 20, 1965. H22.75, W15.

"Map of Europe by Treaty, 1891". Reprinted by Henry Pordes, Publisher & Bookseller, London, England. Undated. H8.25, W11.75.

"Map of Europe 1939 - A Map by Fortune", Undated, H21.5, W27, Fair condition.

"Map of the Harvey Quadrangle", U.S. Dept. of the Interior Geological Survey, July 1893, Reprinted 1924, H20, W16.5.

"Map of the Hazleton Quadrangle", U.S. Dept. of the Interior Geological Survey, Sept. 1893, Reprinted 1938, H20, W16.5.

"Map of the Stoddartsville Quadrangle", U.S. Dept. of the Interior Geological Survey, 1924, Reprinted 1931, H20, W16.5. (Quantity: Two)

"Map of Lexington, Kentucky, 1775", Copyrighted: Ed Wilder, Undated. H17, W22.

"Johnson's California, also Utah, Nevada, Colorado, New Mexico and Arizona, 1860". Published by A.J. Johnson, New York, Reprint undated, H17.5, W24.

"Sectional Map of Pennsylvania and New York". Undated. H9.75, W6.25

"Virginia (Eastern part: including West Virginia) at the Time of the Ratification of the Constitution, from original 1787 to 1775 maps in the Library of Congress at Washington". Issued by the United States Constitution Sesquicentennial Commission, Reprinted 1937. H26, W20.5. bound in protective cover.

"Map Following the Trails of Timothy Murphy Morgan Scout". Undated, H8.25, W18, Fair condition.

"New South Wales, Localities of the Principal Minerals 1876", Published by Thomas Richards, Government Printer, Undated. H15.5, W18.5. Fair condition.

"Orange County, New York 1810". Copyright March 26, 1936, H21, W25.

"Blueprint of the Lands of the L.I. & S. Company in Scranton, Pa.", October 1899, H42, W29.5, Fair condition.

"Blueprint of the Lands of the L.I. & S. Company in Scranton, Pa.", October 1899, H39.5, W28.5.

"Blueprint Historic Iron Furnaces, Scranton, Pa.", Valverde & Franco, Architects, November 2, 1966, H30, W42.25.